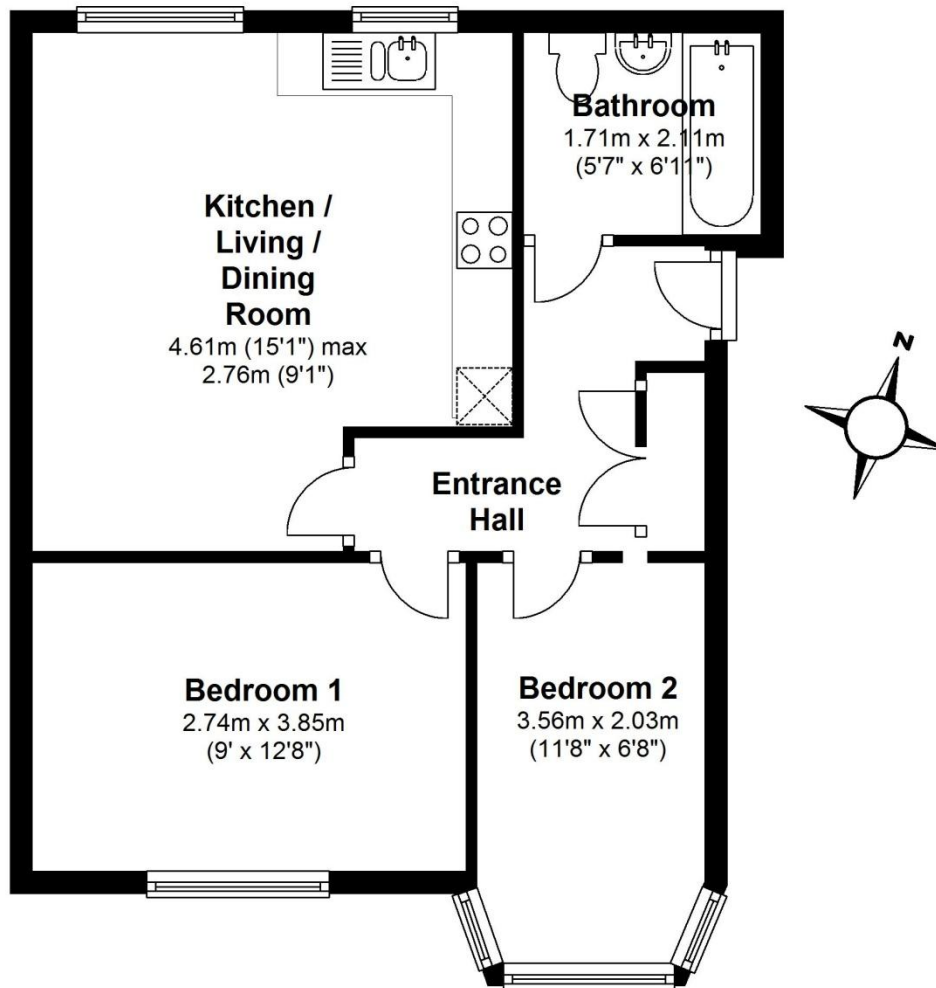


# Flat 1

## Floor Plan

Approx. 36.2 sq. metres (389.9 sq. feet)



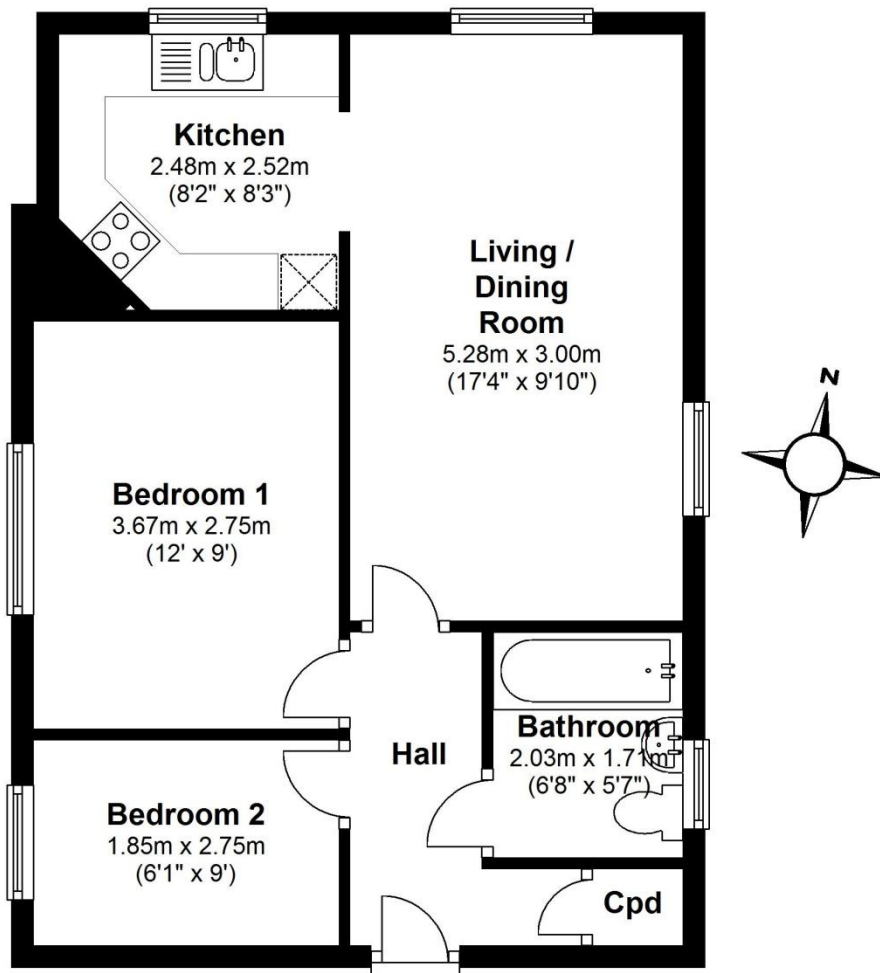
Total area: approx. 36.2 sq. metres (389.9 sq. feet)

Drawings are for guidance only  
Plan produced using PlanUp.

# Flat 2

## Floor Plan

Approx. 49.6 sq. metres (533.8 sq. feet)



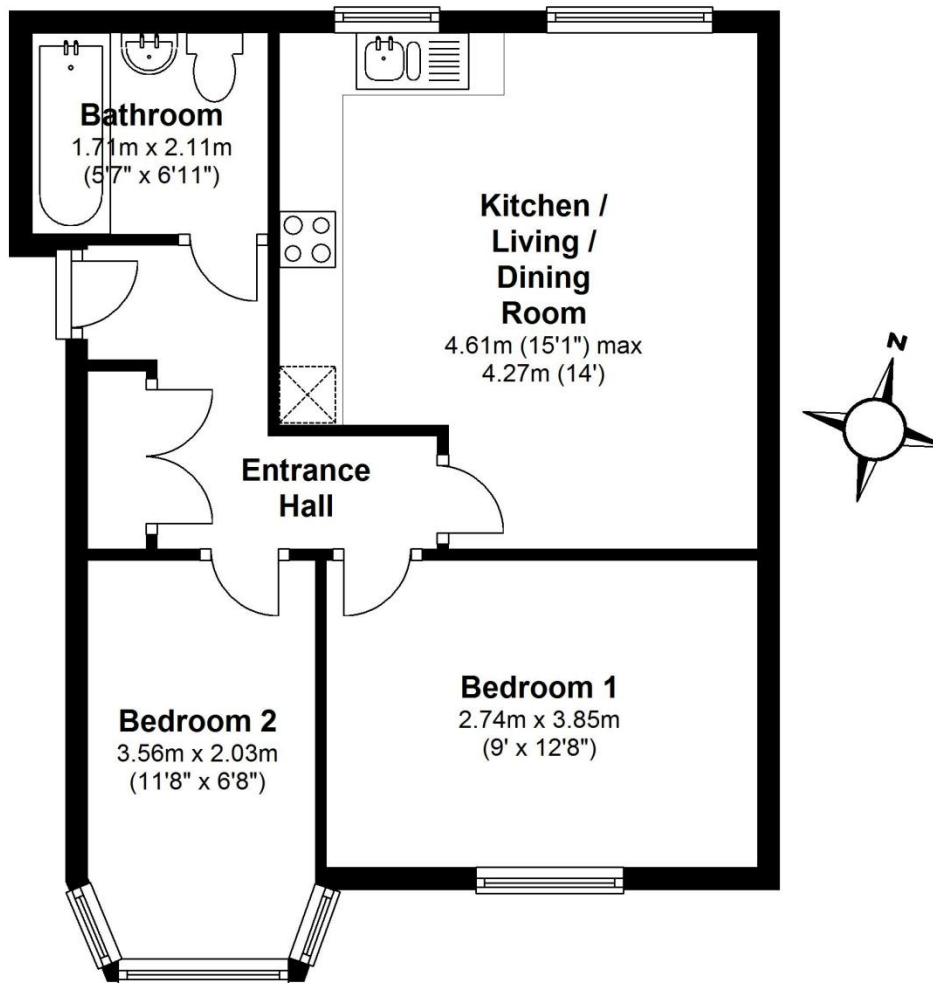
Total area: approx. 49.6 sq. metres (533.8 sq. feet)

Drawings are for guidance only  
Plan produced using PlanUp.

# Flat 3

## Floor Plan

Approx. 48.2 sq. metres (518.5 sq. feet)



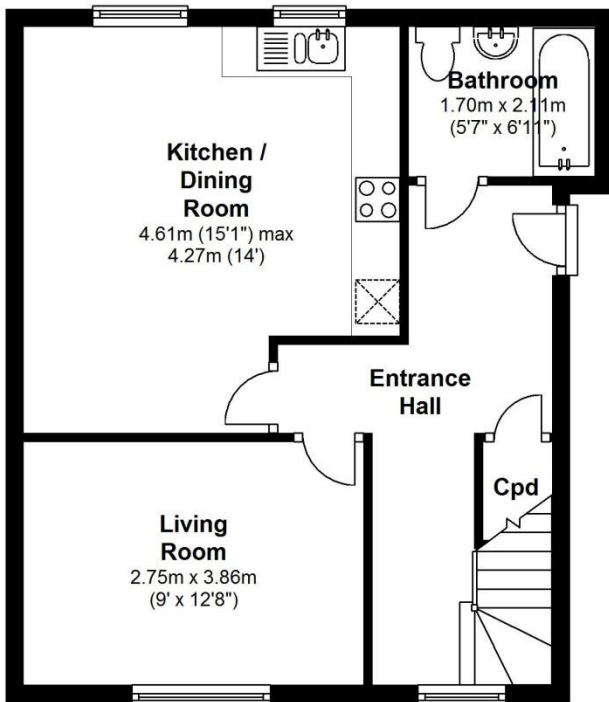
Total area: approx. 48.2 sq. metres (518.5 sq. feet)

Drawings are for guidance only  
Plan produced using PlanUp.

# Flat 4

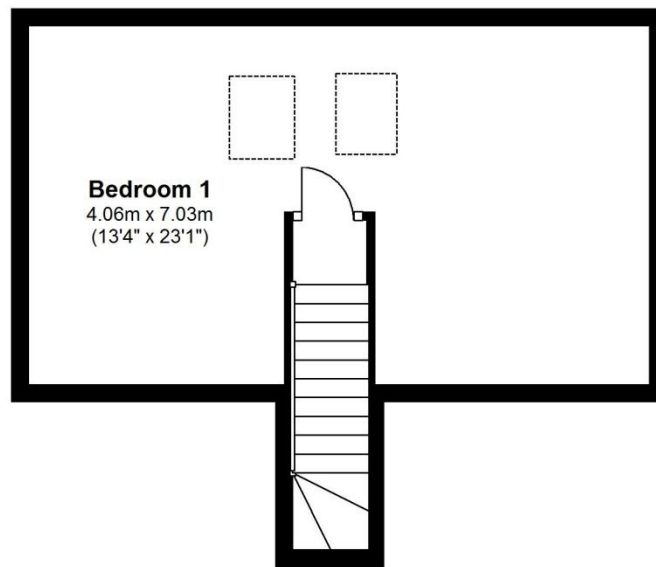
## First Floor

Approx. 45.5 sq. metres (490.2 sq. feet)



## Second Floor

Approx. 30.1 sq. metres (324.4 sq. feet)



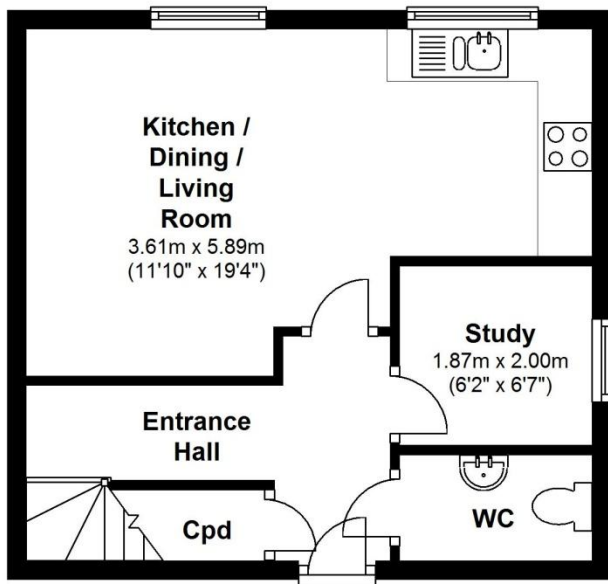
Total area: approx. 75.7 sq. metres (814.6 sq. feet)

Drawings are for guidance only  
Plan produced using PlanUp.

# Flat 5

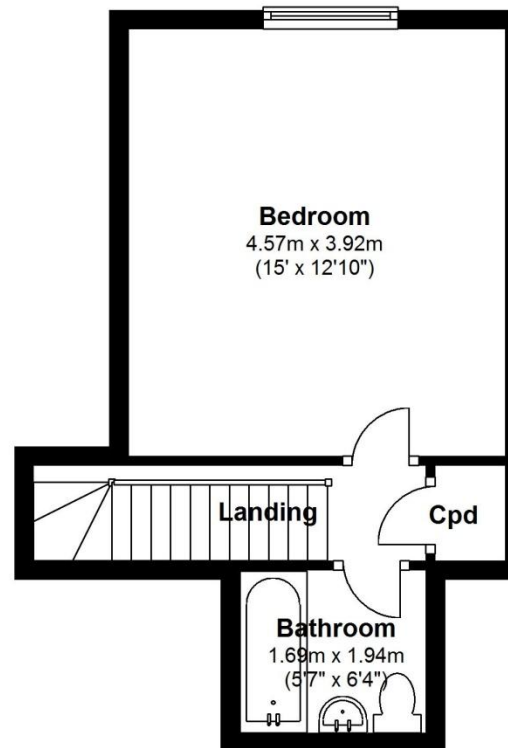
## First Floor

Approx. 32.6 sq. metres (350.4 sq. feet)



## Second Floor

Approx. 26.6 sq. metres (286.5 sq. feet)



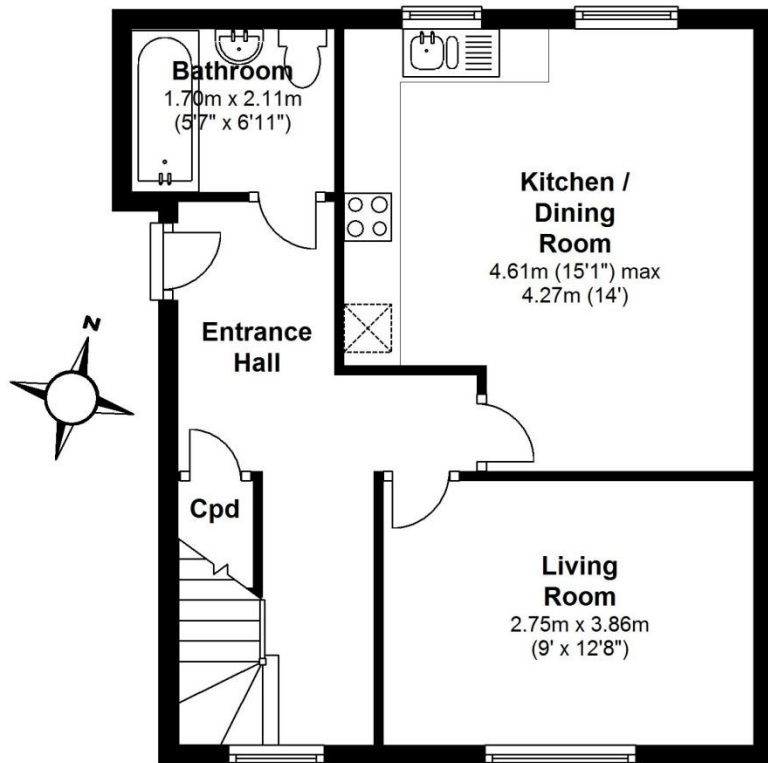
Total area: approx. 59.2 sq. metres (636.9 sq. feet)

Drawings are for guidance only  
Plan produced using PlanUp.

# Flat 6

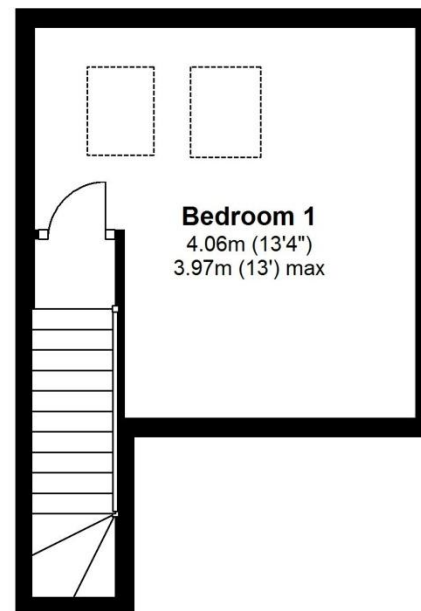
## First Floor

Approx. 45.7 sq. metres (491.9 sq. feet)



## Second Floor

Approx. 17.1 sq. metres (184.2 sq. feet)



Total area: approx. 62.8 sq. metres (676.2 sq. feet)

Drawings are for guidance only  
Plan produced using PlanUp.